



# <A> Press Inox

316L

Raccordi a pressare in acciaio Inox 316L,  
profilo M, misure da 15 mm a 54 mm

## Applicazioni

	Acqua sanitaria	Riscaldamento	Raffrescamento	Aria compressa (priva di oli)	Solare*	Vapore
<b>P max (bar)</b>	16	10	10	16	6	1
<b>T (°C)</b>	0 / +95	0 / +110	-10 (minimo)	0 / +60	0 / +150	0 / +110

\* con O-ring verde in FKM

## Caratteristiche e Vantaggi

- Raccordi in acciaio inossidabile AISI 316L (1.4404)
- Dimensioni disponibili da 15 mm a 54 mm con profilo M
- O-ring con sistema brevettato per identificare i terminali non pressati
- Installazione senza fiamma libera

## Informazioni Tecniche

**Materiale tubi e raccordi**

**Materiale O-ring**

**Norma di riferimento**

**Terminali filettati secondo**

**Dimensioni disponibili**

**Profilo di pressatura**

**Miscela Acqua/Glicole**

Acciaio inossidabile AISI 316L (n. 1.4404)

EPDM nero secondo EN681-1

UNI 11179

EN 10226-1

da 15 mm a 54 mm

Profilo M

Concentrazione Massima 50% / 50%

# <A> Press Inox **316L**



Raccordi a pressare in acciaio Inox 316L, profilo M, misure da 15 mm a 54 mm

## PS26001 Curva a 90° M/F



Dimensione	Bustina	Scatola	Codice Articolo	€/cad
15	10	200	PS26001 0150000	7,04
18	10	150	PS26001 0180000	7,97
22	10	70	PS26001 0220000	10,11
28	5	60	PS26001 0280000	12,46
35	5	30	PS26001 0350000	19,52
42	1	20	PS26001 0420000	35,36
54	1	8	PS26001 0540000	51,79

## PS26002 Curva a 90° F/F

Dimensione	Bustina	Scatola	Codice Articolo	€/cad
15	10	200	PS26002 0150000	7,49
18	10	150	PS26002 0180000	8,39
22	10	70	PS26002 0220000	10,16
28	5	50	PS26002 0280000	12,67
35	5	30	PS26002 0350000	19,52
42	1	20	PS26002 0420000	30,80
54	1	10	PS26002 0540000	51,92



## PS26040 Gomito a 45° M/F



Dimensione	Bustina	Scatola	Codice Articolo	€/cad
15	10	200	PS26040 0150000	7,78
18	10	100	PS26040 0180000	8,49
22	10	80	PS26040 0220000	10,19
28	5	50	PS26040 0280000	12,43
35	5	40	PS26040 0350000	19,50
42	1	20	PS26040 0420000	31,61
54	1	10	PS26040 0540000	47,17

## PS26041 Gomito a 45° F/F

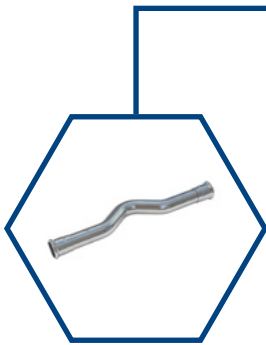
Dimensione	Bustina	Scatola	Codice Articolo	€/cad
15	10	200	PS26041 0150000	7,56
18	10	160	PS26041 0180000	8,12
22	10	80	PS26041 0220000	9,70
28	5	50	PS26041 0280000	12,34
35	5	40	PS26041 0350000	18,59
42	1	10	PS26041 0420000	34,52
54	1	10	PS26041 0540000	48,50





Raccordi a pressare in acciaio Inox 316L, profilo M, misure da 15 mm a 54 mm

## PS26085 Sorpasso F/F



Dimensione	Bustina	Scatola	Codice Articolo	€/cad
15	1	65	PS26085 0150000	44,36
18	1	30	PS26085 0180000	50,27
22	1	20	PS26085 0220000	55,58
28	1	10	PS26085 0280000	80,47

## PS26130 Tee uguale F/F/F

Dimensione	Bustina	Scatola	Codice Articolo	€/cad
15	10	150	PS26130 0151515	12,23
18	10	120	PS26130 0181818	13,64
22	10	70	PS26130 0222222	13,75
28	5	50	PS26130 0282828	18,09
35	5	30	PS26130 0353535	23,23
42	1	15	PS26130 0424242	31,52
54	1	10	PS26130 0545454	42,48



## PS26130 R Tee ridotto F/F/F



Dimensione	Bustina	Scatola	Codice Articolo	€/cad
18 x 15 x 18	10	120	PS26130 0181518	13,08
22 x 15 x 22	10	70	PS26130 0221522	13,22
22 x 18 x 22	10	70	PS26130 0221822	16,24
28 x 15 x 28	5	50	PS26130 0281528	16,56
28 x 18 x 28	10	50	PS26130 0281828	17,06
28 x 22 x 28	5	50	PS26130 0282228	17,13
35 x 15 x 35	5	30	PS26130 0351535	19,42
35 x 18 x 35	5	30	PS26130 0351835	19,79
35 x 22 x 35	5	30	PS26130 0352235	20,32
35 x 28 x 35	5	30	PS26130 0352835	21,11
42 x 15 x 42	1	12	PS26130 0421542	29,78
42 x 22 x 42	1	15	PS26130 0422242	29,84
42 x 28 x 42	1	15	PS26130 0422842	30,42
42 x 35 x 42	1	15	PS26130 0423542	30,71
54 x 15 x 54	1	8	PS26130 0541554	34,42
54 x 22 x 54	1	10	PS26130 0542254	34,42
54 x 28 x 54	1	10	PS26130 0542854	35,22
54 x 35 x 54	1	10	PS26130 0543554	36,83
54 x 42 x 54	1	10	PS26130 0544254	38,42



Raccordi a pressare in acciaio Inox 316L, profilo M, misure da 15 mm a 54 mm

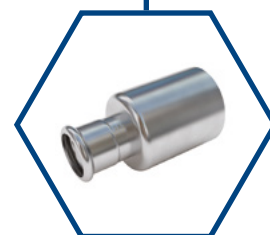


## PS26230B Manicotto F con flangia

Dimensione	Bustina	Scatola	Codice Articolo	€/cad
15	1	24	PS26230B0150000	91,37
18	1	24	PS26230B0180000	97,13
22	1	12	PS26230B0220000	102,26
28	1	12	PS26230B0280000	120,31
35	1	8	PS26230B0350000	194,46
42	1	4	PS26230B0420000	260,07
54	1	4	PS26230B0540000	311,51

## PS26243 Manicotto ridotto M/F

Dimensione	Bustina	Scatola	Codice Articolo	€/cad
18 x 15	10	150	PS26243 0181500	5,46
22 x 15	10	120	PS26243 0221500	6,20
22 x 18	10	120	PS26243 0221800	6,62
28 x 15	5	100	PS26243 0281500	7,16
28 x 18	5	100	PS26243 0281800	7,99
28 x 22	5	100	PS26243 0282200	8,09
35 x 15	5	50	PS26243 0351500	11,01
35 x 18	5	50	PS26243 0351800	11,13
35 x 22	5	50	PS26243 0352200	11,34
35 x 28	5	60	PS26243 0352800	11,43
42 x 15	1	30	PS26243 0421500	14,83
42 x 22	1	27	PS26243 0422200	15,23
42 x 28	1	30	PS26243 0422800	16,95
42 x 35	1	30	PS26243 0423500	17,01
54 x 15	1	10	PS26243 0541500	44,81
54 x 22	1	10	PS26243 0542200	48,77
54 x 28	1	20	PS26243 0542800	49,69
54 x 35	1	20	PS26243 0543500	50,05
54 x 42	1	20	PS26243 0544200	50,88



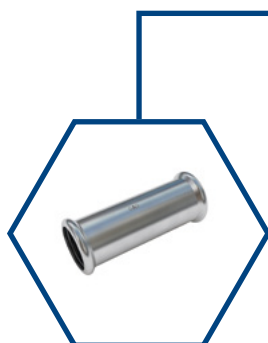
## PS26270 Manicotto con battuta F/F

Dimensione	Bustina	Scatola	Codice Articolo	€/cad
15	10	300	PS26270 0150000	5,24
18	10	200	PS26270 0180000	5,55
22	10	150	PS26270 0220000	6,50
28	5	100	PS26270 0280000	7,42
35	5	60	PS26270 0350000	9,43
42	1	40	PS26270 0420000	14,07
54	1	25	PS26270 0540000	17,81



Raccordi a pressare in acciaio Inox 316L, profilo M, misure da 15 mm a 54 mm

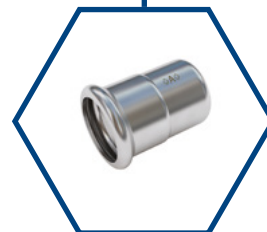
## PS26275 Manicotto passante



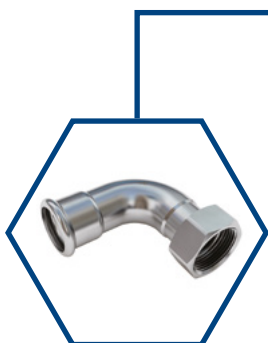
Dimensione	Bustina	Scatola	Codice Articolo	€/cad
15	10	100	PS26275 0150000	9,51
18	10	100	PS26275 0180000	10,34
22	10	100	PS26275 0220000	11,00
28	5	50	PS26275 0280000	12,27
35	5	30	PS26275 0350000	14,23
42	1	20	PS26275 0420000	17,92
54	1	15	PS26275 0540000	23,44

## PS26301 Tappo di chiusura F

Dimensione	Bustina	Scatola	Codice Articolo	€/cad
15	10	350	PS26301 0150000	6,85
18	10	250	PS26301 0180000	8,27
22	10	200	PS26301 0220000	8,86
28	5	150	PS26301 0280000	10,63
35	5	50	PS26301 0350000	15,43
42	1	50	PS26301 0420000	20,08
54	1	25	PS26301 0540000	24,16



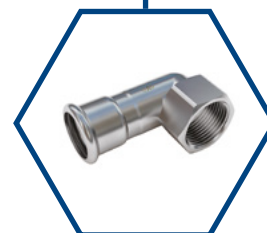
## PS26002G Curva a 90° F/filetto F



Dimensione	Bustina	Scatola	Codice Articolo	€/cad
15 x 1/2	10	100	PS26002G0150400	35,03
18 x 1/2	10	100	PS26002G0180400	36,68
22 x 3/4	10	60	PS26002G0220600	42,89
28 x 1	5	40	PS26002G0280800	55,36
35 x 1 1/4	1	25	PS26002G0351000	97,92
42 x 1 1/2	1	20	PS26002G0421200	130,13
54 x 2	1	10	PS26002G0541600	162,36

## PS26090G Gomito a 90° F/Filetto F

Dimensione	Bustina	Scatola	Codice Articolo	€/cad
15 x 1/2	10	120	PS26090G0150400	14,29
18 x 1/2	10	100	PS26090G0180400	15,71
22 x 1/2	10	50	PS26090G0220400	18,86
22 x 3/4	10	50	PS26090G0220600	21,48
28 x 1	5	40	PS26090G0280800	25,83
35 x 1 1/4	5	20	PS26090G0351000	38,16



# <A> Press Inox **316L**



Raccordi a pressare in acciaio Inox 316L, profilo M, misure da 15 mm a 54 mm

## PS26092G Gomito a 90° F/Filetto M



Dimensione	Bustina	Scatola	Codice Articolo	€/cad
15 x 1/2	10	80	PS26092G0150400	15,23
18 x 1/2	10	80	PS26092G0180400	15,71
22 x 3/4	10	50	PS26092G0220600	21,54
28 x 1	5	30	PS26092G0280800	26,96
35 x 1 1/4	5	25	PS26092G0351000	32,29
42 x 1 1/2	1	20	PS26092G0421200	68,13
54 x 2	1	15	PS26092G0541600	77,84

## PS26130G Tee F/filetto F/F

Dimensione	Bustina	Scatola	Codice Articolo	€/cad
15 x 1/2 x 15	10	120	PS26130G0150415	13,27
18 x 1/2 x 18	10	120	PS26130G0180418	13,44
18 x 3/4 x 18	10	100	PS26130G0180618	14,03
22 x 1/2 x 22	10	70	PS26130G0220422	14,64
22 x 3/4 x 22	10	70	PS26130G0220622	15,09
28 x 1/2 x 28	10	50	PS26130G0280428	16,57
28 x 3/4 x 28	5	50	PS26130G0280628	17,31
28 x 1 x 28	5	40	PS26130G0280828	19,18
35 x 1/2 x 35	5	30	PS26130G0350435	21,00
35 x 3/4 x 35	5	30	PS26130G0350635	28,55
35 x 1 x 35	5	10	PS26130G0350835	23,58
35 x 1 1/4 x 35	5	30	PS26130G0351035	35,87
42 x 1/2 x 42	1	15	PS26130G0420442	39,17
42 x 3/4 x 42	1	15	PS26130G0420642	41,97
42 x 1 1/2 x 42	1	15	PS26130G0421242	47,91
54 x 1/2 x 54	1	10	PS26130G0540454	49,14
54 x 3/4 x 54	1	10	PS26130G0540654	50,07
54 x 2 x 54	1	10	PS26130G0541654	61,07



## PS26133G Tee F/filetto M/F

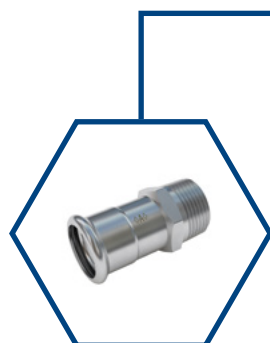


Dimensione	Bustina	Scatola	Codice Articolo	€/cad
15 x 3/8 x 15	10	100	PS26133G0150315	26,67
15 x 1/2 x 15	10	100	PS26133G0150415	28,35
22 x 3/4 x 22	10	60	PS26133G0220622	31,57
28 x 1 x 28	5	40	PS26133G0280828	35,61
35 x 1 1/4 x 35	5	25	PS26133G0351035	38,08



Raccordi a pressare in acciaio Inox 316L, profilo M, misure da 15 mm a 54 mm

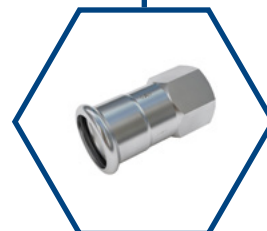
## PS26243G Manicotto F/filetto M



Dimensione	Bustina	Scatola	Codice Articolo	€/cad
15 x 3/8	10	100	PS26243G0150300	9,92
15 x 1/2	10	140	PS26243G0150400	10,03
15 x 3/4	10	100	PS26243G0150600	10,62
18 x 1/2	10	150	PS26243G0180400	10,87
18 x 3/4	10	130	PS26243G0180600	13,18
22 x 1/2	10	130	PS26243G0220400	14,36
22 x 3/4	10	120	PS26243G0220600	14,98
22 x 1	10	90	PS26243G0220800	15,58
28 x 3/4	10	100	PS26243G0280600	15,83
28 x 1	5	70	PS26243G0280800	15,89
28 x 1 1/4	5	40	PS26243G0281000	23,83
35 x 1	5	60	PS26243G0350800	25,20
35 x 1 1/4	5	40	PS26243G0351000	25,55
35 x 1 1/2	5	30	PS26243G0351200	31,45
42 x 1 1/4	1	20	PS26243G0421000	32,89
42 x 1 1/2	1	30	PS26243G0421200	34,61
54 x 1 1/2	1	15	PS26243G0541200	43,53
54 x 2	1	20	PS26243G0541600	50,08

## PS26270G Manicotto F/filetto F

Dimensione	Bustina	Scatola	Codice Articolo	€/cad
15 x 3/8	10	100	PS26270G0150300	10,29
15 x 1/2	10	180	PS26270G0150400	10,29
15 x 3/4	10	140	PS26270G0150600	11,80
18 x 1/2	10	150	PS26270G0180400	11,89
18 x 3/4	10	130	PS26270G0180600	12,69
22 x 1/2	10	100	PS26270G0220400	12,59
22 x 3/4	10	120	PS26270G0220600	12,59
22 x 1	10	90	PS26270G0220800	15,21
28 x 3/4	5	100	PS26270G0280600	16,04
28 x 1	5	70	PS26270G0280800	19,63
28 x 1 1/4	5	40	PS26270G0281000	20,74
35 x 1	5	30	PS26270G0350800	24,11
35 x 1 1/4	5	40	PS26270G0351000	24,24
35 x 1 1/2	5	20	PS26270G0351200	32,56
42 x 1 1/4	1	20	PS26270G0421000	33,91
42 x 1 1/2	1	30	PS26270G0421200	33,91
54 x 1 1/2	1	10	PS26270G0541200	45,84
54 x 2	1	20	PS26270G0541600	45,30



# <A> Press Inox **316L**



Raccordi a pressare in acciaio Inox 316L, profilo M, da 15 mm a 54 mm

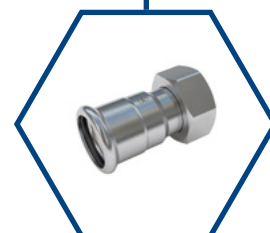
## PS26341G Bocchettone F/filetto M, con guarnizione



	Dimensione	Bustina	Scatola	Codice Articolo	€/cad
●	15 x 1/2	5	100	PS26341G0150400	35,17
●	18 x 1/2	5	80	PS26341G0180400	39,66
●	22 x 3/4	5	60	PS26341G0220600	55,86
●	28 x 1	5	40	PS26341G0280800	77,24
●	35 x 1 1/4	1	25	PS26341G0351000	115,86
●	42 x 1 1/2	1	18	PS26341G0421200	175,17
●	54 x 2	1	10	PS26341G0541600	289,66

## PS26355 Codolo F, con dado folle a sede piana

	Dimensione	Bustina	Scatola	Codice Articolo	€/cad
●	15 x 1/2	10	100	PS26355 0150400	15,81
●	18 x 3/4	10	120	PS26355 0180600	18,16
●	22 x 3/4	10	100	PS26355 0220600	20,32
●	22 x 1	10	50	PS26355 0220800	23,33
●	28 x 1	5	75	PS26355 0280800	25,20
●	35 x 1 1/4	5	20	PS26355 0351000	45,06
●	42 x 1 1/2	1	20	PS26355 0421200	64,93
●	54 x 2	1	10	PS26355 0541600	84,77



## PS26471G Gomito a 90° F/filetto F, con flangia a 2 fori di fissaggio



	Dimensione	Bustina	Scatola	Codice Articolo	€/cad
	15 x 1/2	10	60	PS26471G0150400	19,35
	18 x 1/2	10	50	PS26471G0180400	23,79
	22 x 3/4	5	35	PS26471G0220600	33,49



Raccordi a pressare in acciaio Inox 316L, profilo M, da 15 mm a 54 mm

## PS4992 O-ring in EPDM per A Press INOX



Dimensione	Bustina	Scatola	Codice Articolo	€/cad
15	10	200	PS4992 0150200	0,32
18	10	200	PS4992 0180200	0,36
22	10	200	PS4992 0220300	0,65
28	10	200	PS4992 0280300	0,75
35	10	200	PS4992 0350300	0,89
42	10	200	PS4992 0420400	1,43
54	10	200	PS4992 0540400	1,97

## PSH4992 O-ring in FKM per A Press INOX

Dimensione	Bustina	Scatola	Codice Articolo	€/cad
15	5	500	PSH4992 015020	0,95
18	5	500	PSH4992 018020	1,15
22	5	500	PSH4992 022030	3,60
28	5	500	PSH4992 028030	5,14
35	5	250	PSH4992 035030	6,69
42	5	250	PSH4992 042040	7,00
54	5	250	PSH4992 054040	7,41

