

›B‹ Press

›B‹ Press Gas

›B‹ Press Solar

›B‹ Press XL

›B‹ Press Carbon

›B‹ Press Inox

›B‹ Steel

›B‹ MaxiPro

›B‹ ACR

**K65**

‹A› Press Inox

›B‹ Push

›B‹ Sonic

›B‹ Oyster

›B‹ Flex

Triflow Solder Ring

Delcop End Feed

Delbraze

Medical Gas

Valves

Conex Compression

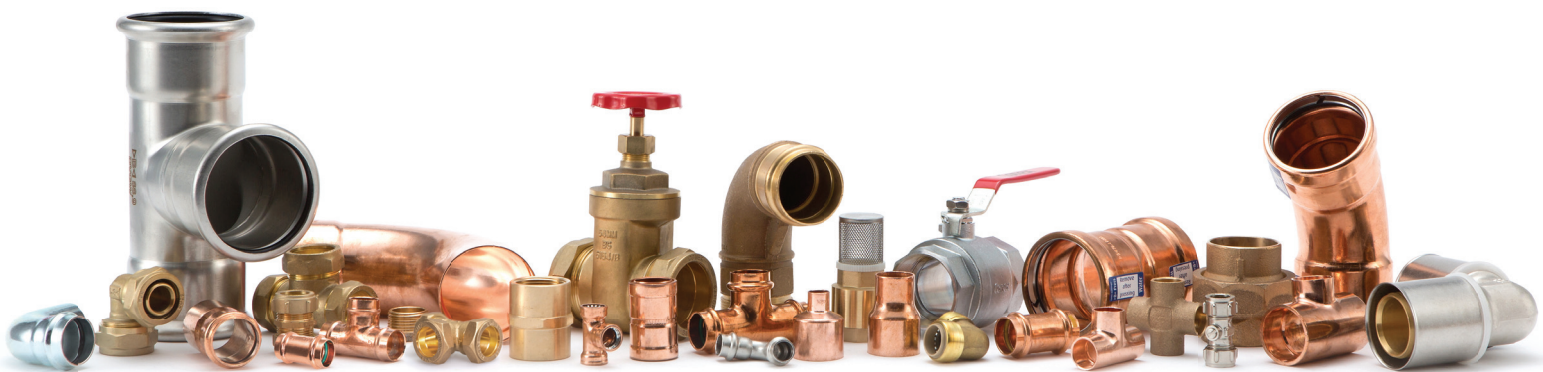
Series 3000

Series 4000

Series 5000

Series 8000

OEM Solutions



Tel: +44 (0)121 557 2831 | Fax: +44 (0)121 557 0185 | Email: salesuk@ibpgroup.com | Website: www.conexbanninger.com

The content of this publication is for general information only. It is the user's responsibility to determine suitability of any product, product data and specifications, for the purpose intended and reference should be made to our Technical Department if clarification is required – technical@ibpgroup.com. All products must be installed in accordance with our installation instructions. In the interests of technical development we reserve the right to change specification, design and materials without notice.

Conex Bänninger products are approved by numerous Standards Authorities and Certification Bodies. This is a representation of the full range from Conex Universal Ltd. Patents and trademarks are registered in numerous countries. Details on registered and pending patents protecting our products is available at public patent registers or can be requested from legal@ibpgroup.com.

# <A> Press Inox



 <A> Press Inox Technical Brochure - 304  
15 to 168 mm

## Contents

1. General 1	
1.1 Quality and certification	
1.2 Features and benefits	
1.3 Materials and threads	
1.4 Storage and handling	
1.5 Black EPDM sealing elements	
1.6 Leak before press indicator	
1.7 Cold bending of stainless steel tubes	
1.8 System testing	
1.9 Electrical continuity	
1.10 Recommended water velocities	
1.11 COSHH (Control of substances hazardous to health)	
1.12 Tube compatibility	
1.13 Product marking	
2. Applications .....	3
3. Product Suitability .....	4
3.1 Drinking water installations	
3.2 Heating and cooling systems	
3.3 Local, district and solar heating	
4. Thermal Expansion .....	4
4.1 Effects of expansion	
4.2 Expansion devices	
5. Corrosion Resistance, Frost / Heat Protection.....	5
5.1 Frost protection and heat gain	
5.2 Internal corrosion	
5.3 Disinfection and sterilisation	
5.4 External corrosion	
5.5 Thermal insulation	
5.6 Connecting to other materials	
6. Pressure Testing .....	6
6.1 Flushing of water installations	
6.2 Water softening	
7. Compatible Press Tools .....	7
7.1 Tool chart	
8. Loss Coefficients.....	9
9. Installation Requirements.....	10
9.1 Space required for the pressing process	
9.2 Insertion depth and minimum distances between pressings	
9.3 Minimum distance for press fittings from an existing brazed joint	
9.5 <A> Press INOX tube compatibility table	
10. Tube Preparation .....	12
11. Fitting Installation Instructions .....	13
12. The Range .....	14
13. Product Guarantee.....	26

## 1. General

<A> Press Inox M profile is a flame-free fitting, manufactured using high quality stainless steel material which can be used for multiple applications.

### 1.1 Quality and certification

Conex Bänninger has 110 years of experience in manufacturing innovative products and operates an accredited Quality Management System to EN ISO 9001.

<A> Press Inox press fittings are tested and certified by independent national certification bodies confirming their suitability and reliability for water applications. <A> Press Inox is certified by the following bodies:

Table 1

<A> Press Inox fittings 15 to 168 mm		Material grade
UK	WRAS	304

<A> Press Inox tube 15 to 168 mm		Material grade
PL	ITB KOT 2021/2023	304

### 1.2 Features and benefits

- Suitable for hot and cold water installations, local and district heating installations, rainwater harvesting. For additional applications please refer to section 2.
- Easy to install, saving on labour time.
- Permanent, flame-free connection – no brazing or soldering consumables or hot works permit required.
- Leak before press indicator assists identification of unpressed joints.
- Maximum continuous operating temperature 110 °C.
- Manufactured using high quality materials, including an EPDM O-ring, that is to applicable standards.
- Suitable for in-built water installations.
- Tested and approved by national and international standard authorities.
- Full product guarantee, for full terms and conditions please see section 13.
- Available in sizes 15 to 108 mm.
- Suitable for use with stainless steel tubes to EN 10312 series 1 and 2. See tube compatibility table in section 9.5.
- Compatible with commonly available press tools (see section 7).

### 1.3 Materials and threads

<A> Press Inox fittings are available in Material grade 1.4301 (AISI 304) for applications including drinking water which are WRAS approved.

<A> Press Inox tubes are available in material 1.4301 (AISI 304). The tubes correspond in properties and dimensions with the requirements of EN 10312 in both wall thicknesses, Series 1 and 2.



## Threaded connections

<A> Press Inox fittings are available with male and female threaded connections to the following standards:

- Joining threads are to ISO 7-1 and EN10226-1. Female are parallel and male are taper.
- Fastening threads are to ISO 228-1 parallel.

## 1.4 Storage and handling

Store in a cool and dry place to protect the fittings from contamination, damage and dirt. Keep out of direct sunlight. Fittings should be left in their packaging to preserve the lubrication on the O-rings prior to installation.

## 1.5 Black EPDM sealing elements

<A> Press Inox EPDM O-rings are peroxide-cured rubber seals with high elasticity, excellent cold and heat performance.

Please refer to section 2 for the fitting operating parameters for the different applications.

## 1.6 Leak before press indicator

<A> Press Inox benefits from patented 'leak-before-press' O-ring technology (15 to 54 mm) which indicates if a joint has not been pressed. The O-ring contains two in-built water pathways that in the unpressed condition allows water to pass through and create a noticeable leak when the system is tested at low pressure (0.1 to 6.0 bar). Any unpressed joints can be pressed without draining down.



## 1.7 Cold bending of stainless steel tubes

Stainless steel tubes up to 28 mm, comply with EN 10312 Series 1 & 2. Tubes can be bent cold with suitable bending equipment, with a minimum bend radius of 3.5 times the tube diameter.

## 1.8 System testing

Pressure testing should be carried out to the appropriate standard (e.g. EN 806 specifies 1.1 x maximum design pressure) or to the satisfaction of the supervising engineer with a maximum test pressure of 1.5 times the operating pressure.

## 1.9 Electrical continuity

<A> Press Inox fittings maintain earth continuity without the need for additional continuity straps.

## 1.10 Recommended water velocities

Please note the maximum allowances for water velocities are per the relevant national standards and codes, which includes EN 806 part 2 and part 3.

## 1.11 COSHH

(Control of substances hazardous to health)

It is the responsibility of the end user to ensure that adequate protection is available where required and the necessary information regarding possible health and safety regulations is adhered to. Stainless steel fitting is considered non-hazardous under normal circumstances.

## 1.12 Tube compatibility

<A> Press Inox fittings can be used on stainless steel tubes manufactured in accordance with EN 10312 Series 1 and 2. Please refer to section 9.5 for the full tube compatibility table.

## 1.13 Product marking

- <A> Press Inox 304 fittings are marked on the body '304'



## 2. Applications

<A> Press Inox fittings are suitable for use in the following applications.

Table 2

Application	Flow medium	Pressure bar	Temp °C
Water installations	Water	10 max	95
		16 max	25
Hot water heaters EN 12828	Heating water	6	110 max
Local and district heating tubes	Heating and district heating water	10	110 max
Water based air conditioning systems	Water and water-glycol mixtures. Mixing ratio max 50/50%.	6	-10 min
Rainwater harvesting systems	Rainwater from cisterns.	10	25

Maximum acceptable chloride level is 200 ppm for 304 material in supply and waste water systems.

\* h/a – Hours per annum

\*\* In the event of deviating parameters, please contact the technical department, [technical@ibpgroup.com](mailto:technical@ibpgroup.com).

For applications outside those stated in the table above, please contact the technical department: [technical@ibpgroup.com](mailto:technical@ibpgroup.com).

## 3. Product Suitability

The application parameters referred to in section 2 and the tube compatibility must be adhered to when using and connecting to a <A> Press Inox system.

### 3.1 Water installations

Water installations must be planned and operated in accordance with local regulations, codes of practice and by laws and standards governing the installation e.g. EN 806: parts 1 to 4: Specifications for installations inside buildings.

For <A>Press Inox applications please see section 1.2, table 2.

### 3.2 Heating and cooling systems

In closed heating, cooling and chilled water systems, there is generally an absence of oxygen which greatly reduces the likelihood of corrosion. This means a range of metallic materials may be used without the risk of corrosion; flow direction does not need to be taken into consideration.

Consequently, <A> Press Inox fittings can be combined with other materials in a closed oxygen free system (reference EN14868:2005

Whilst, oxygen entry cannot always be fully prevented in extensive tube systems. EN 806 part 2 and 4 provide instructions for the measures to be taken in this case (chemical oxygen binding).

In the case of open vented systems, appropriate precautions should be taken with mixed metals to avoid any bi-metallic corrosion issues. <A> Press Inox fittings and tube must not be installed with copper open vented circulating systems. It can be installed in unidirectional systems with the direction of flow having stainless steel before copper.

### 3.3 Local, district heating

<A> Press Inox system can be used in local, district heating systems with the operating parameters referred to in section 2.0. Please contact our technical team first if special additives need to be added to the hot water for corrosion protection or sealing purposes.

## 4. Thermal Expansion

### 4.1 Effects of expansion

Using the general equation for change in length (linear expansion) which is:

$$\Delta L = L \times \Delta t \times a$$

Where:

$\Delta L$  = change in length in mm

L = length in m

$\Delta t$  = change in temperature °C

a = coefficient of linear expansion.

For example, a 10 m length of 304 stainless steel tube, irrespective of its size, wall thickness or temper, will increase in length by 10.38 mm with a temperature rise of 60 where the coefficient of linear expansion for 304 stainless steel = 0.0173 i.e.  $10.38 = 10 \times 60 \times 0.0173$

Tubes installed on hot water services must be free to accommodate this expansion; otherwise stresses will build up in the pipework that may lead to joints being pulled apart and/or tubes fracturing. Clearly the magnitude and frequency of such changes in length will determine the life of the joint or failure of the tube.

Table 3 shows the amount of tube expansion for a given temperature rise. In the case of tube in domestic hot water and heating installations the limited size of rooms and hence straight tube runs, together with the many bends and offsets that normally occur, will result in thermal movement being accommodated automatically. However, where long straight tube runs, exceeding 10 m, are encountered, allowance for expansion should be made.

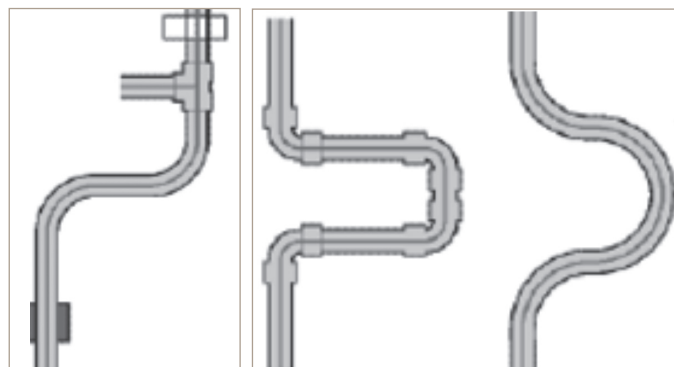
A quick, economic and effective way of accommodating thermal expansion is to simply incorporate the horseshoe or compensating bend to the system design.

### 4.2 Expansion devices

Where stainless steel tubes pass through walls, floors and ceilings, they should be able to move as a result of expansion and contraction. This can be arranged by passing the tube through a sleeve or length of larger diameter tube fixed through the whole thickness of the wall, floor or ceiling, or by means of flexible joints on either side of the wall.

Short stubs to and from radiators, connected to relatively long straight runs should also be avoided. This can usually be achieved by introducing an expansion loop, thereby increasing the length of pipework fixed between the flow/return legs and the radiator connection. However, expansion accommodation techniques such as the use of loops and horseshoes may not be sufficient to accommodate large expansions and in such cases the use of the bellow type couplers may be necessary.

The table below shows the increase in length due to thermal expansion as a function of change in temperature  $\Delta t$  and the length of the tube, irrespective of diameter, temper or wall thickness.



By change of direction

Horseshoe or compensating bend

Table 3

Thermal Expansion - Stainless Steel 304 - Coefficient of Expansion = 0.0173								
Tube length m	Change in length mm with temperature difference $\Delta t$ °C							
	$\Delta t=30^\circ$	$\Delta t=40^\circ$	$\Delta t=50^\circ$	$\Delta t=60^\circ$	$\Delta t=70^\circ$	$\Delta t=80^\circ$	$\Delta t=90^\circ$	$\Delta t=100^\circ$
0.1	0.0519	0.0692	0.0865	0.1038	0.1211	0.1384	0.1557	0.173
0.2	0.1038	0.1384	0.173	0.2076	0.2422	0.2768	0.3114	0.346
0.3	0.1557	0.2076	0.2595	0.3114	0.3633	0.4152	0.4671	0.519
0.4	0.2076	0.2768	0.346	0.4152	0.4844	0.5536	0.6228	0.692
0.5	0.2595	0.346	0.4325	0.519	0.6055	0.692	0.7785	0.865
0.6	0.3114	0.4152	0.519	0.6228	0.7266	0.8304	0.9342	1.038
0.7	0.3633	0.4844	0.6055	0.7266	0.8477	0.9688	1.0899	1.211
0.8	0.4152	0.5536	0.692	0.8304	0.9688	1.1072	1.2456	1.384
0.9	0.4671	0.6228	0.7785	0.9342	1.0899	1.2456	1.4013	1.557
1	0.519	0.692	0.865	1.038	1.211	1.384	1.557	1.73
2	1.038	1.384	1.73	2.076	2.422	2.768	3.114	3.46
3	1.557	2.076	2.595	3.114	3.633	4.152	4.671	5.19
4	2.076	2.768	3.46	4.152	4.844	5.536	6.228	6.92
5	2.595	3.46	4.325	5.19	6.055	6.92	7.785	8.65
10	5.19	6.92	8.65	10.38	12.11	13.84	15.57	17.3
15	7.785	10.38	12.975	15.57	18.165	20.76	23.355	25.95
20	10.38	13.84	17.3	20.76	24.22	27.68	31.14	34.6
25	12.975	17.3	21.625	25.95	30.275	34.6	38.925	43.25

## 5. Corrosion Resistance, Frost / Heat Protection

### 5.1 Frost protection and heat gain

Regulations require that all water services (except warning or overflow pipes) shall be protected from freezing temperatures and heat gain. This is best achieved by protecting the system by use of a suitable thickness of insulation or in the case of particular situations such as unheated roof spaces that require special care, a self-regulating trace heating tape.

### 5.2 Internal corrosion

Within a stainless steel pipework system a passive layer, mostly formed from chromic oxide is created upon contact with oxygen or oxygenated water (i.e. drinking water). This layer restricts corrosion from occurring and provides high levels of hygiene, durability and water quality.

If there are chloride levels above those deemed acceptable, a breakdown of the passive layer may occur allowing corrosion to occur in the form of pitting, crevice or stress corrosion. Maximum acceptable chloride level is 200 ppm in supply and waste water systems.

It has also been proved that crevice and pitting corrosion increases with temperature, however for drinking water systems, everyday temperatures and chloride levels should not be a problem. On the other hand borehole water may have increased levels of chlorine meaning more care should be taken to make sure levels are within the tolerable range.

### 5.3 Disinfection and sterilisation

For the sterilisation process, chlorine of concentrations up to 25ppm during a 24 hour period is acceptable, providing that the lines are comprehensively flushed with fresh water and that residual chlorine is restricted to <1ppm. It is recommended that this is verified by analysis.

### 5.4 External corrosion

External corrosion of stainless steel systems is likely to occur when exposed to high levels of chloride. <A> Press Inox fittings should not be installed in this situation. However, if there are parts of the system where this is unavoidable, appropriate precautions must be taken to minimise the risk.

### 5.5 Thermal insulation

The thermal insulations of tubes should be implemented in accordance with national codes and standard including BS 5970.

### 5.6 Connecting to other materials

Stainless steel, copper and copper alloys can easily be combined without the risk of corrosion. Please note carbon steel should not be directly connected to stainless steel as this will cause corrosion. A spacer connector of brass material should be used to separate the two dissimilar materials by at least 50 mm. Flow of water should be in the direction of carbon steel to stainless steel and not visa versa.

Precautions against freezing must also be undertaken. This is particularly important in new build housing when properties are not occupied for extended periods.

For heating and cooling applications, <A> Press Inox fittings can be used with glycol-water mixtures up to a mixing ratio of 50:50 without affecting the product quality and the sealing element.

If a frost protection inhibitor is to remain in the pipelines permanently, at least one concentration test must be carried out annually. All chemical additions must be agreed before use to rule out negative interactions with materials and sealing elements (O-rings). For more information, please contact Conex Bänninger technical department.

## 6. Pressure Testing

Pressure testing on <A> Press Inox fittings should normally be carried out using clean drinking water. Only in exceptional circumstances should pneumatic pressure testing using compressed inert gas or air be used, and then only under carefully controlled conditions.

Pressure testing should be carried out in accordance with national regulations and appropriate specifications drawn up and a risk assessment must be completed prior to testing.

Typically, when testing systems containing <A> Press Inox fittings, all joints shall remain uncovered and visible, the system shall be filled with clean drinking water against an open high point valve allowing all trapped air to be removed from the network. Once free of trapped air, the high-level valve should closed and the system topped up, at that stage testing be completed between 1-2 bar to ensure any un-pressed joints are identified. Any identified joints that have not been pressed and leaking water can be pressed without draining down however it is essential the tube is fully inserted to the tube stop prior to pressing. Once it is confirmed there are no un-pressed joints, the pressure can be raised slowly to the system test pressure.

The recommended system test pressure should be in accordance with the requirements of EN 806 part 4 (1.1 x maximum design pressure). Full test pressure should be maintained for a minimum of 30 minutes without any sign of pressure drop. A full inspection should then be carried out to identify any leaks.

## 6.1 Flushing of water installations

It is essential to flush the systems with water after installation to remove dust, and debris. Commissioning should be carried out in accordance with EN 806-4.

If installations are not used immediately after commissioning, they should be flushed at regular intervals, at least once a week. After an extended time, the system should be disinfected to comply with legionella guidelines.

## 6.2 Water softening

Hard water may be softened to avoid excessive deposits of scale in hot water services. <A> Press Inox system is fully compatible with reverse osmosis and ion exchange treatment methods and highly resistant to corrosions with softened decarbonised water or desalinated water.

## 7. Compatible Press Tools

### 7.1 Tool chart

Table 4

15 to 35 mm Compact 19kN machines						
Manufacturer	Press machine	Press jaws	Size range (mm)	Profile	EN 10312 Series 1	EN 10312 Series 2
Rems	Mini Press ACC	Rems - Mini	15 to 35	M	Yes	Yes
Klauke	MAP219/MAP2L19	Klauke – SBMX	15 to 28	M	No	Yes
Novopress	ACO102/ACO103	NovoPress - Press jaw M15 to M35	15 to 35	M	Yes	Yes
Geberit Mapress	ACO102/ACO103	Geberit - Press jaws [1 series] M15 to M35 (Black colour)	15 to 35	M	Yes	Yes
Pegler XPress	ACO102/ACO103	Pegler SB211 PB1 series	15 to 35	M	Yes	Yes

Table 4

15 to 54 mm Standard 32kN machines						
Manufacturer	Press machine	Press jaws	Size range (mm)	Profile	EN 10312 Series 1	EN 10312 Series 2
Rems	Power-Press/ Akku-Press	Rems - Standard	15 to 54	M	Yes	Yes
Klauke	UAP2/UAP3L/UAP332	Klauke - Standard SB	15 to 54	M	No	Yes
Novopress	ECO202/ACO202	Novopress - Press jaws M15 to M35	15 to 35	M	Yes	Yes
	ECO203/ACO203	Novopress - Press Collars - M42, M54 plus ZB203 Adaptor	42 to 54	M	Yes	Yes
	ACO202XI/ACO203XL	Novopress - Press Collars - M42, M54 plus ZB203 Adaptor	42 to 54	M	Yes	Yes
Geberit Mapress	ECO202/ACO202	Geberit - Press jaws [2 series] M15 to	15 to 35	M	Yes	Yes
	ECO203/ACO203	M35 (Black colour)	15 to 35	M	Yes	Yes
	ACO202XI/ACO203XL	Geberit - Press Collars - M42, M54 plus ZB203A Adaptor	42 to 54 42 to 54	M M	Yes Yes	Yes Yes
Pegler Xpress	ECO202/ACO202	Pegler S227 ECOTEC series	15 to 35	M	Yes	Yes
	ECO203/ACO203	Press Jaws	15 to 35	M	Yes	Yes
	ACO202XI/ACO203XL	Pegler S228 series Press Collars plus ZB203 Adaptor	42 to 54 42 to 54	M M	Yes Yes	Yes Yes

Table 5













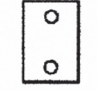
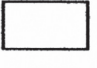

76 to 108 mm Standard 32 kN machines			
Manufacturer	Press machine	Press sling/Chain/Collar/Ring	Jaw profile
Novopress	ACO202XL/203XL	Novopress - Collars + ZB231 + ZB322 adaptor	M
Klauke	UAP4/UAP4L/UAP432	Klauke - Chains + SBKQC adaptor	KSP3

For full machine/tool compatibility please refer to the website - [www.conexbanninger.com](http://www.conexbanninger.com)

## 8. Loss Coefficients

Table 6

Symbol	Designation	Z	Application		Symbol	Designation	Z	Application	
			DW	H				DW	H
	Angle or elbow reference value in accordance with DIN 1988 T3	0,70	X	X		Distributor outlet	0,5	X	X
						Collective inlet	1,0	X	X
	Angle 90° r/d (r/d = 1,2 with fittings complying with DIN EN 1254)	= 0,5 = 1,0 = 2,0 = 3,0	1,0 0,35 0,20 0,15	X X X X		Reservoir outlet	0,5	X	
	Angle $\beta = 90^\circ$ $= 60^\circ$ $= 45^\circ$	1,3 0,8 0,4	X X X	X X X		Inlet	1,0	X	X
	Angle					Reducer	0,4	X	X
	Crossover	0,5	X	X		Constriction $\beta$ - constant =	30° 0,02 45° 0,04 60° 0,07	X X X	X X X
	Branch, square flow separation	1,3	X	X		Expansion $\beta$ - constant =	10° 0,10 20° 0,15 30° 0,20 40° 0,20	X X X X	X X X X
	Flow merging	0,9	X	X		Expansion bends	1,0	X	X
	Clearance at flow merging	0,3	X	X		Compensator	2,0	X	X
	Clearance at flow merging	0,6	X	X		Compensator	2,0	X	X
	Counter-flow at flow merging	3,0	X	X					
	Counter-flow at flow separation	1,5	X	X					

Symbol	Designation	Z	Application		Symbol	Designation	Z	Application	
			DW	H				DW	H
	Branch, curved flow separation	0,9	X	X					
	Flow merging	0,4	X	X					
	Clearance at flow separation	0,3	X	X					
	Clearance a flow merging	0,2	X	X					
	Angle valves DN 10 DN 15 DN 20 to DN 50 DN 65 to DN 100	7,0 4,0 2,0 3,5 4,0	X X X X X	X X X X X					
	Diaphragm valves DN 15 DN 20 DN 25 to DN 32 DN 40 to DN 100	10,0 8,5 7,0 6,0 5,0	X X X X X	X X X X X					
	Shutter valves Piston valves Ball valves DN 10 to DN 15 DN 20 to DN 25 DN 32 to DN 150	1,0 0,5 0,3	X X X	X X X					
	Radiator valves	4,0		X					
	Control valve	2,0		X					
	Pressure regulator fully open	30,0		X					
	Shut-off valve Straight seat valve DN15 DN20 DN25 DN32 DN40 to DN100	10,0 8,5 7,0 6,0 5,0							
	Angle seat valve DN 15 DN20 DN 25 to DN50 DN65	3,5 2,5 2,0 0,7							
	Return flow inhibitor DN 15 to DN 20 DN 25 to DN 40 DN 50 DN 65 to DN 100	7,7 4,3 3,8 2,5							
	Control valve with return flow inhibitor DN 20 DN 25 to DN 50	6,0 5,0							
	Valve tapping sleeve DN 25 to DN 80	5,0							
	Boiler	2,5							X
	Heating radiator	2,5							X
	Panel radiator	3,0							X

## 9. Installation Requirements

### 9.1 Space required for the pressing process

The following minimum clearances are required from structural components to allow operation of tool for press fitting.

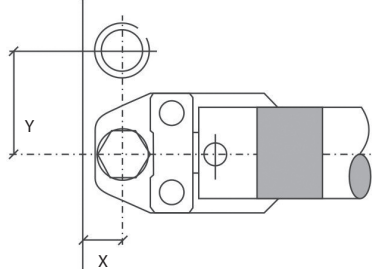


Table 7

Space required for the pressing process between fittings and wall.		
External tube	X	Y
Size mm	mm	mm
15	26	53
22	26	56
28	33	69
35	33	73
42	75	115
54	85	120
76.1	115	165
88.9	125	185
108	135	200

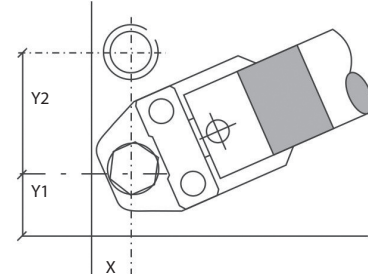


Table 8

Space required for the pressing process between fittings and wall corner.			
External tube	X	Y1	Y2
Size mm	mm	mm	mm
15	31	45	73
22	31	45	76
28	38	55	80
35	38	55	85
42	75	75	115
54	85	85	140
76.1	115	115	165
88.9	125	125	185
108	135	135	200

### 9.2 Insertion depth and minimum distances between pressings

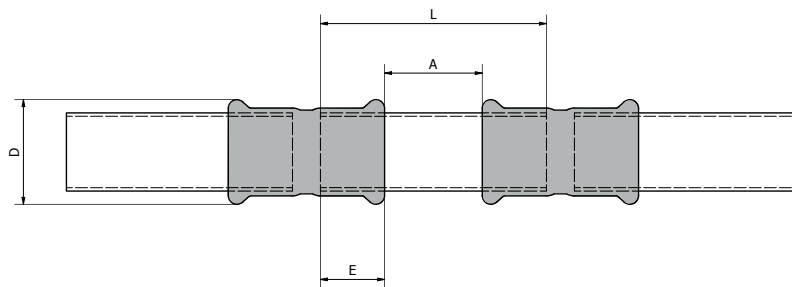


Table 9

Insertion depth and minimum distance between pressings				
Size	External - Ø pressing bead	Minimum distance	Minimum tube length	Insertion depth
mm	D - mm	A - mm	L - mm	E - mm
15	22	10	50	20
18	25	10	55	20
22	23	20	62	21
28	35.5	20	66	23
35	42.5	25	77	26
42	51	30	90	30
54	62.7	35	105	35
76.1	81	40	142	52
88.9	94	50	142	52
108	114	50	170	60

### 9.3 Minimum distance for press fittings from an existing welded joint

To ensure proper sealing of both the welded and <A> Press Inox fitting, the following minimum distances must be maintained between the two fittings. Please see Table 10 for further information.

Table 10

Minimum distance from a welded joint	
Tube size	mm
15	5
22	5
28	5
35	10
42	15
54	20
76.1	40
88.9	50
108	50

### 9.4 Minimum welding distance to an existing pressed fitting

Caution: Welding near <A> Press Inox joints should be avoided as this may cause the seal to degrade due to heat transfer. Table 11 states the minimum distance away from the press joint which is acceptable to weld. If this distance cannot be maintained then adequate precautions must be taken such as fabricating the welded section prior to assembly with the press fittings, wrapping in a wet rag or applying a hot block to prevent heat transfer to the press fitting during welding.

Table 11

Minimum distance welding	
Tube size	mm
15	450
22	600
28	700
35	900
42	1200
54	1500
76.1	2000
88.9	2000
108	2000

### 9.5 <A> Press Inox tube compatibility table

The dimensions of stainless steel tube, to be used with <A> Press Inox need to be to standard EN 10312 Series 1 or Series 2.

Table 12

Tube O/D	Tube wall thickness (mm)	
	Wall thickness (series 1)	Wall thickness (series 2)
15	0.7	1.0
18	0.7	1.0
22	0.7	1.2
28	0.8	1.2
35	1.0	1.5
42	1.1	1.5
54	1.2	1.5
76.1	1.5	2.0
88.9	2.0	2.0
108	2.0	2.0
114,3	2.0	2.0
139,7	2.0	2.6
168,3	2.0	2.6

## 10. Tube Preparation

To ensure a secure and permanent joint the tube must be correctly prepared prior to installation. Incorrect tube preparation can result in damaging the O-ring and causing the fittings to leak.

Note: Avoid grinding wheels, fast cutting saw and hacksaws as they are not suitable for cutting tube. If the tube ends become distorted, remove the damaged section by using the appropriate cutting method.

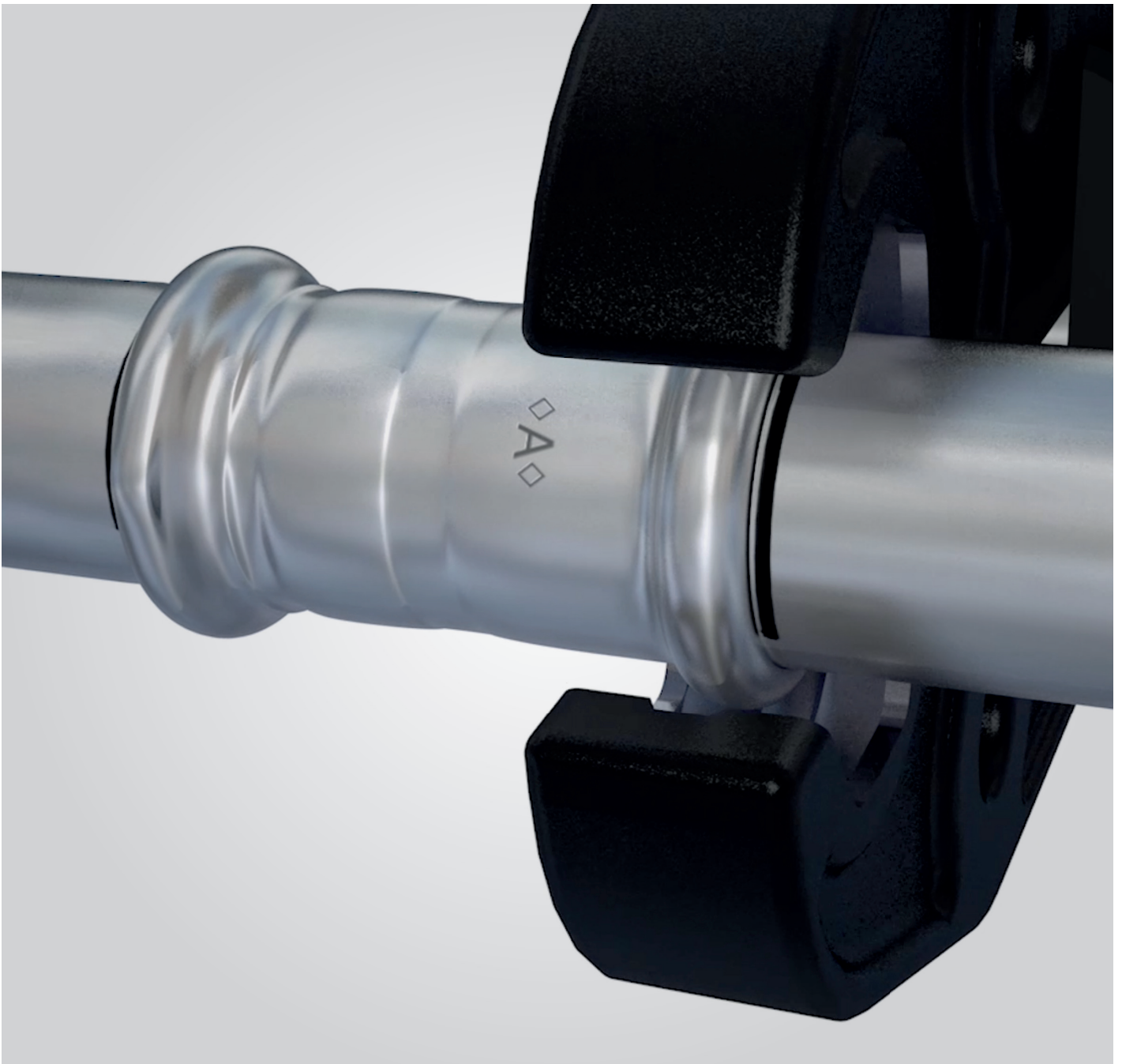
When preparing tube ensure that the tube is correctly supported and eye protection is worn. If using

power tools, great care must be taken. Refer to the manufacturers instructions before use.

Safety note: When using press tools, care must be taken to ensure hands are kept away from the jaw during the pressing process. Always wear ear and eye protection.

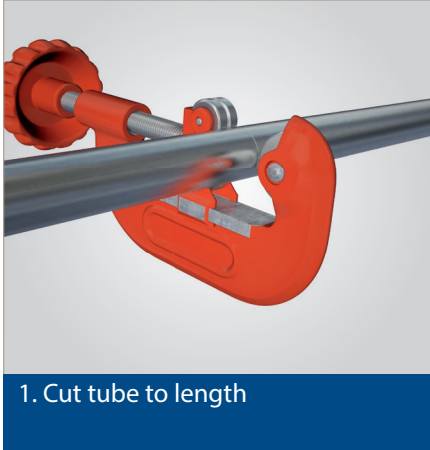
Sizes 15 mm - 108 mm

For instructions on how to cut the tube please refer to section 11.



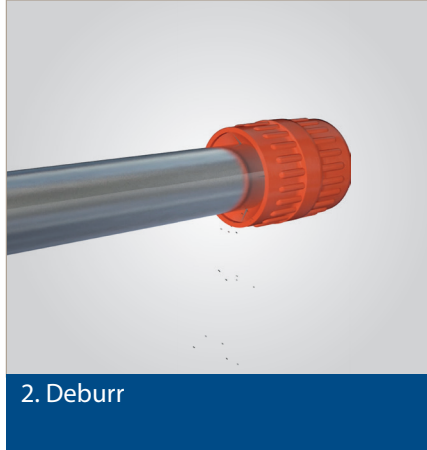
## 11. Fitting Installation Instructions

Leave the fittings in the packaging prior to final installation to protect them from contamination and to preserve the lubrication of the O-rings. Please note the space required for pressing tools (see section 9).



1. Cut tube to length

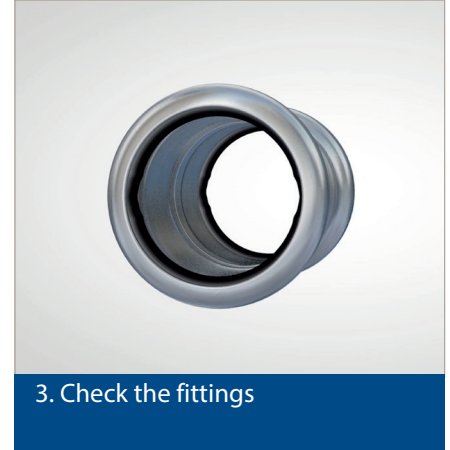
- Use a rotary tube cutter.
- Ensure that the tube is cut square.
- Check the tube has maintained its shape and is damage free.



2. Deburr

- Deburr the tube both internally and externally.
- Where possible angle the tube downwards to prevent filings entering the tube.
- Make sure the internal and external surfaces of the tube ends are smooth and free from burrs and sharp edges.

**Caution:** Please ensure that the tube surface is free from any deep score or scratches.



3. Check the fittings

- Check the fittings is the correct size for the tube.
- Check the O-rings are present and correctly seated.
- It is good practice to add a small amount of Conex Bänninger press fitting lubricant to the O-rings to aid tube insertion.



4. Assemble and mark the insertion depth

- The tube must be fully inserted into the fitting until it reaches the tube stop.
- To reduce the risk of dislodging the O-ring, rotate the tube (if possible) while slipping it into the fittings.
- Mark the insertion depth on the tube.
- Prior to pressing ensure the tube has not moved out from the fitting socket.



5. Complete the joint with the press tool

- Ensure pipework is correctly aligned prior to pressing.
- Ensure the correct size jaw is inserted into the tool.
- The jaws must be placed squarely on the fitting, locating the groove on the bead.
- The bead on the fitting should fit centrally in the groove of the jaw.
- Depress and hold the start button on the press tool to complete the pressing cycle.
- Pressing is complete when the jaws are fully closed.

**Caution:** The <A> Press Inox joint is complete after one full cycle of the tool. Do not crimp any <A> Press Inox fitting more than once.



6. Completed joint

- Mark the completed joint after pressing.
- This enables joints to be inspected easily before testing.

## 12.The Range

PSND001  
90° Street Elbow



PSND002  
90° Elbow



PSND002G  
CxFi 90° Swivel Connector



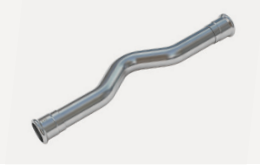
PSND040  
45° Obtuse Street Elbow



PSND041  
45° Obtuse Elbow



PSND085  
Full Crossover Coupler



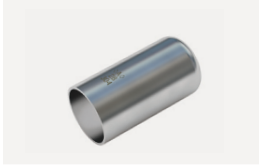
PSND090G  
CxFi 90° Elbow ISO - 7



PSND092G  
CxMi 90° Elbow ISO - 7



PSND292  
Plug End



PSND130  
Equal Tee



PSND130  
Reduced Branch Tee



PSND130G  
CxCXFi Branch Tee ISO - 7



PSND133G  
CxCxMi Branch Tee ISO - 7



PSND230B  
Flange Adaptor PN16



PSND243  
Fitting Reducer



14

PSND355  
CxFi Con Flat Seal Face



PSND243G  
CxMi Coupler ISO - 7



PSND270  
Coupler



PSND270G  
CxFi Coupler ISO - 7



PSND301  
Cap End



PSND275  
Slip Coupler



PSND340G  
3-Pcs Female Thread Union



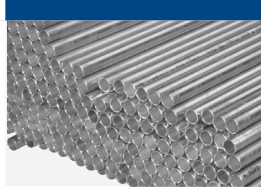
PSND341G  
3-Pcs Male Thread Union



PSND471G  
Wallplate Elbow ISO - 7

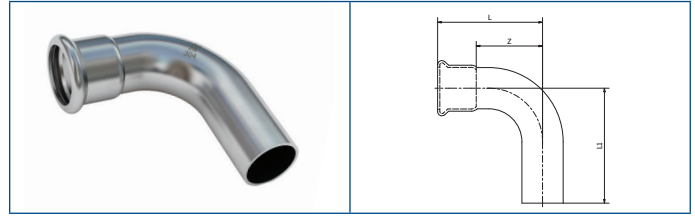


<A> Press Inox tube



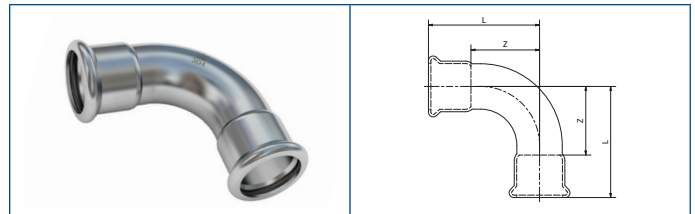
MPABPSOIL100ML  
Fitting Lubricant for O-ring





**PSND001**  
90° Street Elbow

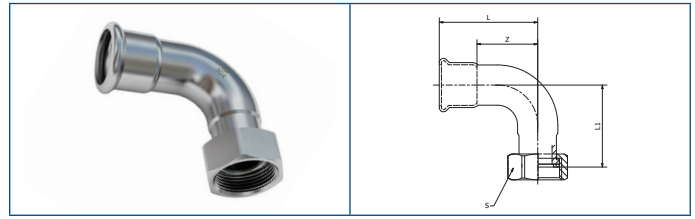
Code 304	Fitting size	L	L1	Z
PSND001 0150000	15	45	52	25
PSND001 0180000	18	50	57	30
PSND001 0220000	22	57	70	36
PSND001 0280000	28	68.5	76	45.5
PSND001 0350000	35	73.5	90	47.5
PSND001 0420000	42	85	100	55
PSND001 0540000	54	104	121	69
PSND001 0760000	76.1	177	166	124
PSND001 0890000	88.9	205	194	147
PSND001 1080000	108.0	247	240	175



**PSND002**  
90° Elbow

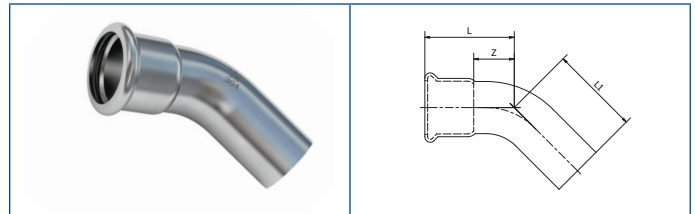
Code 304	Fitting size	L	Z
PSND002 0150000	15	45	25
PSND002 0180000	18	50	30
PSND002 0220000	22	57	36
PSND002 0280000	28	68.5	45.5
PSND002 0350000	35	73.5	47.5
PSND002 0420000	42	85	55
PSND002 0540000	54	104	69
PSND002 0760000	76.1	177	124
PSND002 0890000	88.9	205	147
PSND002 1080000	108.0	247	175

\*All above measurements are in mm unless stated differently.



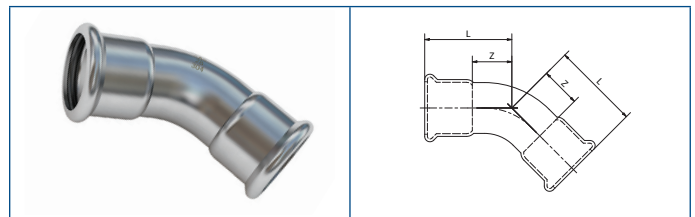
PSND002G  
CxFi 90° Swivel Connector

Code 304	Fitting size	L	L1	Z	S
PSND002G0150400	15 x 1/2"	45	38	25	24
PSND002G0180400	18 x 1/2"	50	43	30	24
PSND002G0220600	22 x 3/4"	57	47	36	30
PSND002G0280800	28 x 1"	68	58.5	45	37
PSND002G0351000	35 x 1 1/4"	73.5	65	47.5	46
PSND002G0421200	42 x 1 1/2"	85.5	83	55.5	52.5
PSND002G0541600	54 x 2"	116	106	81	64



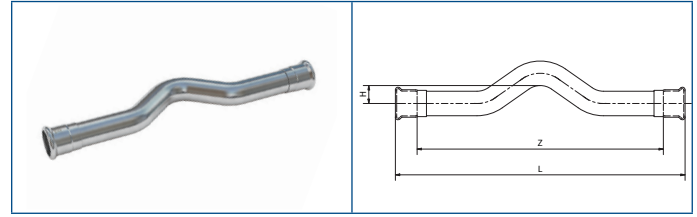
PSND040  
45° Obtuse Street Elbow

Code 304	Fitting size	L	L1	Z
PSND040 0150000	15	39	48	19
PSND040 0180000	18	39	48	19
PSND040 0220000	22	45	56	24
PSND040 0280000	28	52	60	29
PSND040 0350000	35	58	68	32
PSND040 0420000	42	70	78	40
PSND040 0540000	54	83	92	48
PSND040 0760000	76.1	113.5	111	60.5
PSND040 0890000	88.9	129	130	71
PSND040 1080000	108.0	156	157	84



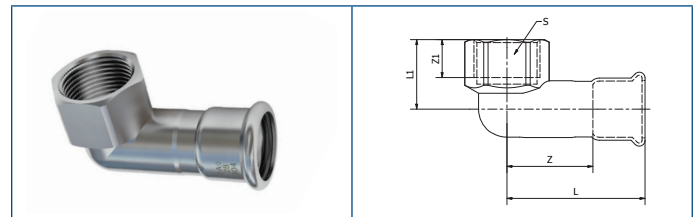
PSND041  
45° Obtuse Elbow

Code 304	Fitting size	L	Z
PSND041 0150000	15	36	16
PSND041 0180000	18	36	16
PSND041 0220000	22	42	21
PSND041 0280000	28	52	29
PSND041 0350000	35	58	32
PSND041 0420000	42	70	40
PSND041 0540000	54	75	40
PSND041 0760000	76.1	113.5	60.5
PSND041 0890000	88.9	129	71
PSND041 1080000	108.0	156	84



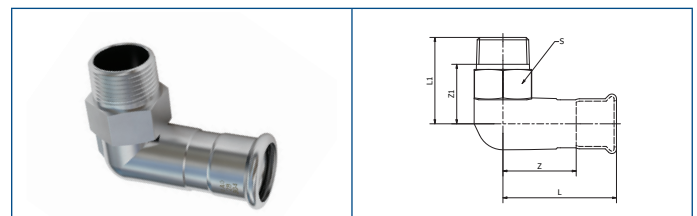
**PSND085**  
Full Crossover Coupler

Code 304	Fitting size	L	Z	H
PSND085 0150000	15	167	127	12.5
PSND085 0180000	18	186	146	14
PSND085 0220000	22	203	161	16
PSND085 0280000	28	227.5	181.5	20.5



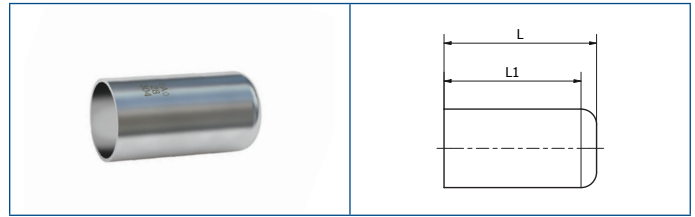
**PSND090G**  
CxFi 90° Elbow ISO - 7

Code 304	Fitting size	L	L1	Z	Z1	S
PSND090G0150400	15 x 1/2"	53.5	26.5	33.5	15.5	26
PSND090G0180400	18 x 1/2"	53.7	25.7	33.7	15.5	26
PSND090G0220400	22 x 1/2"	53.7	25.7	32.7	15.5	26
PSND090G0220600	22 x 3/4"	61	31	40	16.5	32
PSND090G0280800	28 x 1"	69.5	35	46.5	20	38
PSND090G0351000	35 x 1 1/4"	77.5	40	51.5	21.5	48



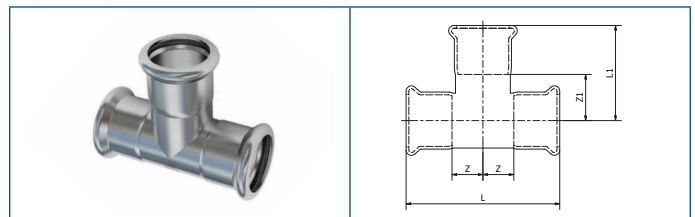
**PSND092G**  
C x Mi 90° Elbow ISO - 7

Code 304	Fitting size	L	L1	Z	Z1	S
PSND092G0150400	15 x 1/2"	59	37	39	21	24.5
PSND092G0180400	18 x 1/2"	61	37	41	21	24.5
PSND092G0220600	22 x 3/4"	62.5	46	41.5	29.5	28
PSND092G0280800	28 x 1"	71	54	48	35	34
PSND092G0351000	35 x 1 1/4"	78	55	52	33	44
PSND092G0421200	42 x 1 1/2"	84	60	54	35	50
PSND092G0541600	54 x 2"	97.5	65	62.5	38	62



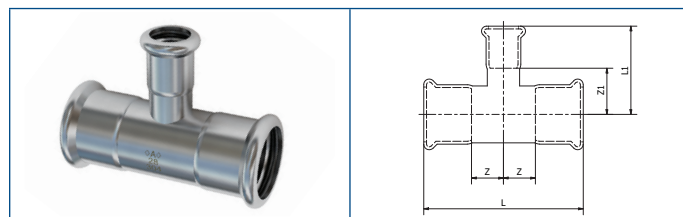
PSND292  
Plug End

Code 304	Fitting size	L	L1
PSND292 0150000	15	47	42
PSND292 0220000	22	53	47.5
PSND292 0280000	28	54	49
PSND292 0350000	35	59	54
PSND292 0420000	42	59	54
PSND292 0540000	54	65	60



PSND130  
Equal Tee

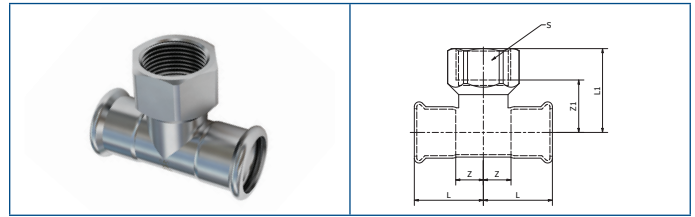
Code 304	Fitting size	L	L1	Z	Z1
PSND130 0151515	15	68	39	14	9.5
PSND130 0181818	18	68	42	14	10.5
PSND130 0222222	22	74	45	16	13.5
PSND130 0282828	28	84	52	19	17
PSND130 0353535	35	103	57	25	19.5
PSND130 0424242	42	116	62	28	23
PSND130 0545454	54	140	77	35	29.5
PSND130 0767676	76.1	224	108.5	64	55.5
PSND130 0898989	88.9	252	125.5	68	67.5
PSNDT 108108108	108.0	304	151	80	79



## PSND130 Reduced Branch Tee

Code 304	Fitting size	L	L1	Z	Z1
PSND130 0181518	18 x 15 x 18	68	41.5	14	21.5
PSND130 0221522	22 x 15 x 22	74	43	16	23
PSND130 0221822	22 x 18 x 22	74	45	16	25
PSND130 0281528	28 x 15 x 28	84	46.5	19	26.5
PSND130 0281828	28 x 18 x 28	84	48.5	19	28.5
PSND130 0282228	28 x 22 x 28	84	48.5	19	27.5
PSND130 0351535	35 x 15 x 35	102.5	49	25	29
PSND130 0351835	35 x 18 x 35	102.5	51	25	31
PSND130 0352235	35 x 22 x 35	102.5	51	25	30
PSND130 0352835	35 x 28 x 35	102.5	54.5	25	31.5
PSND130 0421542	42 x 15 x 42	116	52.5	28	32.5
PSND130 0421842	42 x 18 x 42	116	54.5	28	34.5
PSND130 0422242	42 x 22 x 42	116	54.5	28	33.5
PSND130 0422842	42 x 28 x 42	116	58	28	35
PSND130 0423542	42 x 35 x 42	116	60.5	28	34.5
PSND130 0541554	54 x 15 x 54	140	59	35	39
PSND130 0541854	54 x 18 x 54	140	61.5	35	41.5
PSND130 0542254	54 x 22 x 54	140	61	35	40
PSND130 0542854	54 x 28 x 54	140	64.5	35	41.5
PSND130 0543554	54 x 35 x 54	140	67	35	41
PSND130 0544254	54 x 42 x 54	140	68.5	35	38.5
PSND130 0762276	76.1 x 22 x 76.1	224	72.5	64	52
PSND130 0762876	76.1 x 28 x 76.1	224	76	64	53.5
PSND130 0763576	76.1 x 35 x 76.1	224	78.5	64	52.5
PSND130 0764276	76.1 x 42 x 76.1	224	80	64	50
PSND130 0765476	76.1 x 54 x 76.1	224	88.5	64	54
PSND130 0892289	88.9 x 22 x 88.9	252	78	68	57
PSND130 0892889	88.9 x 28 x 88.9	252	82.5	68	60
PSND130 0893589	88.9 x 35 x 88.9	252	84	68	58
PSND130 0894289	88.9 x 42 x 88.9	252	86.5	68	56.5
PSND130 0895489	88.9 x 54 x 88.9	252	95	68	60.5
PSND130 0897689	88.9 x 76 x 88.9	252	114	68	61
PSNDT 108022108	108 x 22 x 108	304	87	80	66
PSNDT 108028108	108 x 28 x 108	304	93	80	70
PSNDT 108035108	108 x 35 x 108	304	85	80	70
PSNDT 108042108	108 x 42 x 108	304	103	80	73
PSNDT 108054108	108 x 54 x 108	304	105.5	80	71
PSNDT 108076108	108 x 76 x 108	304	124.5	80	71.5
PSNDT 108089108	108 x 88.9 x 108	304	134	80	76

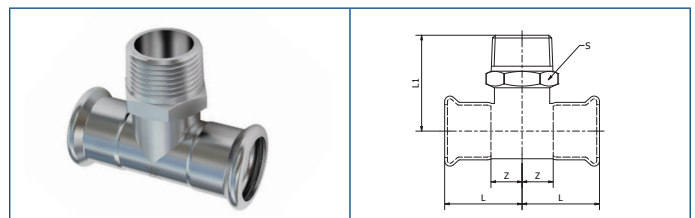
\*All above measurements are in mm unless stated differently.



**PSND130G**  
C x C x Fi Branch Tee ISO - 7

Code 304	Fitting size	L	L1	Z	S
PSND130G0150415	15 x 1/2" x 15	34	39.5	14	26
PSND130G0180418	18 x 1/2" x 18	34	41	14	26
PSND130G0180618	18 x 3/4" x 18	34	42	14	31
PSND130G0220422	22 x 1/2" x 22	37	43	16	26
PSND130G0220622	22 x 3/4" x 22	37	44	16	31
PSND130G0280428	28 x 1/2" x 28	42	46	19	26
PSND130G0280628	28 x 3/4" x 28	42	47	19	31
PSND130G0280828	28 x 1" x 28	42	51	19	39
PSND130G0350435	35 x 1/2" x 35	51	49	25	26
PSND130G0350635	35 x 3/4" x 35	51	50	25	31
PSND130G0350835	35 x 1" x 35	51	55.5	25	39
PSND130G0351035	35 x 1-1/4" x 35	51	55.5	25	48
PSND130G0420442	42 x 1/2" x 42	58	52	28	26
PSND130G0420642	42 x 3/4" x 42	58	53	28	31
PSND130G0420842	42 x 1" x 42	58	57	28	39
PSND130G0421242	42 x 1-1/2" x 42	58	61	28	55
PSND130G0540454	54 x 1/2" x 54	70	58	35	26
PSND130G0540654	54 x 3/4" x 54	70	59	35	31
PSND130G0540854	54 x 1" x 54	70	63	35	39
PSND130G0541654	54 x 2" x 54	70	73	35	67
PSND130G0760676	76 x 3/4" x 76	112	71.5	64	31
PSND130G0761676	76 x 2" x 76	112	85	59	67
PSND130G0890689	88,9 x 3/4" x 88,9	126	77.5	68	31
PSND130G0891689	88.9 x 2" x 88.9	126	90.5	68	67
PSNDTG108006108	108 x 3/4" x 108	152	91	80	31
PSNDTG108016108	108 x 2" x 108	152	100	80	67

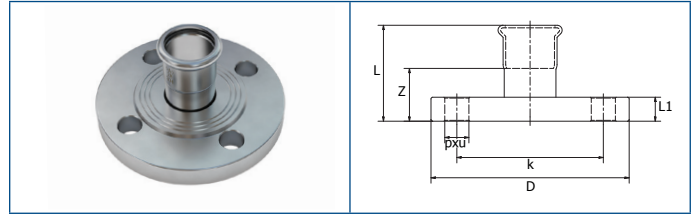
20



**PSND133G**  
CxCxMi Branch Tee ISO - 7

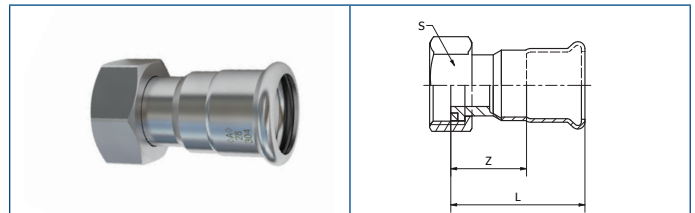
Code 304	Fitting size	L	L1	Z	S
PSND133G0150315	15 x 3/8" x 15	34	34.5	14	19
PSND133G0150415	15 x 1/2" x 15	34	40	14	24
PSND133G0180418	18 x 1/2" x 18	34	42	14	24.5
PSND133G0180618	18 x 3/4" x 18	34	44	14	28
PSND133G0220622	22 x 3/4" x 22	37	48	16	28
PSND133G0280828	28 x 1" x 28	42	52	19	34
PSND133G0351035	35 x 1 1/4" x 35	51.2	60	25	44

\*All above measurements are in mm unless stated differently.



**PSND230B**  
Flange Adaptor PN16

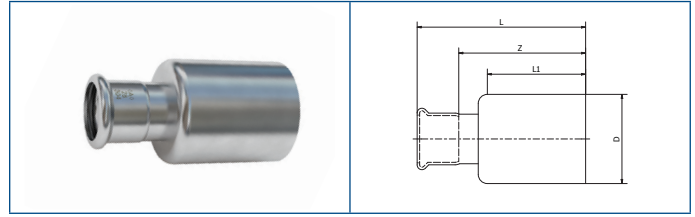
Code 304	Fitting size	L	L1	Z	D	k	d	n
PSND230B0150000	15	43	14	23	95	65	14	4
PSND230B0180000	18	43	14	23	95	65	14	4
PSND230B0220000	22	48	16	27	105	75	14	4
PSND230B0280000	28	56	16	33	115	85	14	4
PSND230B0350000	35	60.5	18	34.5	140	100	18	4
PSND230B0420000	42	73	18	43	140	100	18	4
PSND230B0540000	54	89	20	54	165	125	18	4
PSND230B0760000	76.1	109	20	56	185	145	18	8
PSND230B0890000	88.9	123	20	65	200	160	18	8
PSND230B1080000	108	150	22	78	220	180	18	8



**PSND355**  
CxFi Con Flat Seal Face

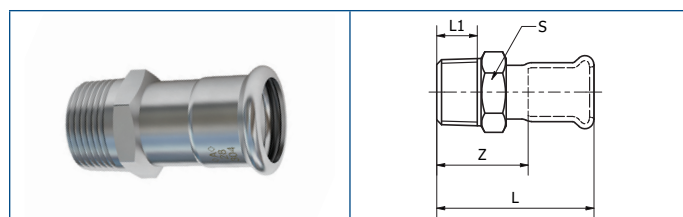
Code 304	Fitting size	L	Z	S
PSND355 0150400	15 x 1/2"	52.5	32.5	24
PSND355 0150600	15 x 3/4"	49.5	29.5	30
PSND355 0180400	18 x 1/2"	50.5	30.5	24
PSND355 0180600	18 x 3/4"	52.5	32.5	24
PSND355 0220600	22 x 3/4"	54.5	34.5	24
PSND355 0220800	22 x 1"	54.5	34.5	24
PSND355 0280800	28 x 1"	52.5	32.5	30
PSND355 0281000	28 x 1-1/4"	60.5	38	46
PSND355 0351000	35 x 1-1/4"	53.5	32.5	30
PSND355 0351200	35 x 1-1/2"	70.5	44.5	52.5
PSND355 0421200	42 x 1-1/2"	60	39	36
PSND355 0421600	42 x 2"	83.5	53.5	65
PSND355 0541600	54 x 2"	83	48	64

\*All above measurements are in mm unless stated differently.



## PSND243 Fitting Reducer

Code 304	Fitting size	D	L	L1	Z
PSND243 0181500	18 x 15	18	66	35.5	46
PSND243 0221500	22 x 15	22	67	32	45
PSND243 0221800	22 x 18	22	66	33	46
PSND243 0281500	28 x 15	28	92	45	68
PSND243 0281800	28 x 18	28	88.5	49	68.5
PSND243 0282200	28 x 22	28	73	40	52
PSND243 0351500	35 x 15	35	90	53	70
PSND243 0351800	35 x 18	35	92.5	53	72.5
PSND243 0352200	35 x 22	35	95	53	74
PSND243 0352800	35 x 28	35	85	58	75
PSND243 0421500	42 x 15	42	92	53	72
PSND243 0421800	42 x 18	42	93.5	45	73.5
PSND243 0422200	42 x 22	42	94	54	73
PSND243 0422800	42 x 28	42	96	52	73
PSND243 0423500	42 x 35	42	93	45	67
PSND243 0541500	54 x 15	54	99	60	79
PSND243 0541800	54 x 18	54	99.5	50	79.5
PSND243 0542200	54 x 22	54	99	60	78
PSND243 0542800	54 x 28	54	102	60	79
PSND243 0543500	54 x 35	54	104	59	78
PSND243 0544200	54 x 42	54	102	50	72
PSND243 0762200	76 x 22	76.1	138.5	70	117.5
PSND243 0762800	76 x 28	76.1	140	70	117
PSND243 0763500	76 x 35	76.1	142	70	116
PSND243 0764200	76.1 x 42	76.1	140	70	110
PSND243 0765400	76.1 x 54	76.1	145	70	110.5
PSND243 0894200	88.9 x 42	89.9	154	80	124
PSND243 0895400	88.9 x 54	88.9	156	80	121.5
PSND243 0897600	88.9 x 76.1	88.9	176	80	123
PSND243 1085400	108 x 54	108	180	95	145.5
PSND243 1087600	108 x 76	108	192	95	139
PSND243 1088900	108 x 88.9	108	210	95	152



**PSND243G**  
CxMi Coupler ISO - 7

Code 304	Fitting size	L	min L1	Z	S
PSND243G0150300	15 x 3/8"	54	10.5	34	19
PSND243G0150400	15 x 1/2"	59.5	15	39.5	24
PSND243G0150600	15 x 3/4"	65.5	15.5	45.5	28
PSND243G0180400	18 x 1/2"	61.5	15	41.5	24
PSND243G0180600	18 x 3/4"	65.5	15.5	45.5	28
PSND243G0220400	22 x 1/2"	62.5	15	44.5	24
PSND243G0220600	22 x 3/4"	65.5	15.5	44.5	28
PSND243G0220800	22 x 1"	71	18	50	34
PSND243G0280600	28 x 3/4"	85	15.5	62	28
PSND243G0280800	28 x 1"	71	18	48	34
PSND243G0281000	28 x 1 1/4"	81	21	58	44
PSND243G0350800	35 x 1"	71.5	18	45.5	35
PSND243G0351000	35 x 1 1/4"	78.5	21	52.5	44
PSND243G0351200	35 x 1 1/2"	91	23.5	65	50
PSND243G0421000	42 x 1 1/4"	96	21	66	44
PSND243G0421200	42 x 1 1/2"	81	23.5	51	50
PSND243G0541200	54 x 1 1/2"	105.5	23.5	69.5	50
PSND243G0541600	54 x 2"	96.5	25.8	61.5	62
PSND243G0762000	76,1 x 2 1/2"	127.5	26.7	74.5	85
PSND243G0892400	88,9 x 3"	144.5	29.8	86.5	95
PSND243G1083200	108 x 4"	170	39.3	98	125

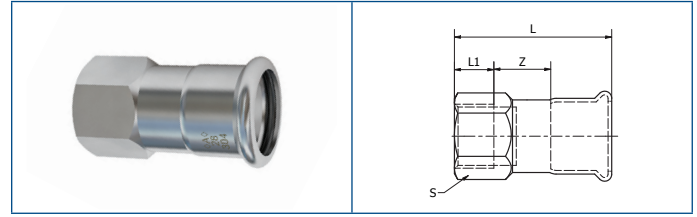
23



**PSND270**  
Coupler

Code 304	Fitting size	L	Z
PSND270 0150000	15	48	8
PSND270 0180000	18	48	8
PSND270 0220000	22	50	8
PSND270 0280000	28	56	10
PSND270 0350000	35	65	13
PSND270 0420000	42	74	14
PSND270 0540000	54	86	16
PSND270 0760000	76.1	141	35
PSND270 0890000	88.9	162	42
PSND270 1080000	108.0	194	44

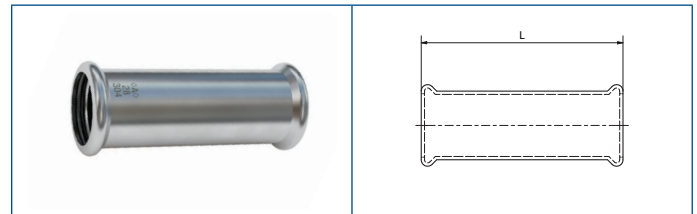
\*All above measurements are in mm unless stated differently.



**PSND270G**  
CxFi Coupler ISO -7

Code 304	Fitting size	L	L1	Z	S
PSND270G0150300	15 x 3/8"	54	13.5	20	19
PSND270G0150400	15 x 1/2"	58.5	15	22.5	26
PSND270G0150600	15 x 3/4"	61.5	16.3	24.5	31
PSND270G0180400	18 x 1/2"	60.5	15	24.5	26
PSND270G0180600	18 x 3/4"	61.5	16.3	24.5	31
PSND270G0220400	22 x 1/2"	60.5	15	23.5	26
PSND270G0220600	22 x 3/4"	62	16.3	24	31
PSND270G0220800	22 x 1"	69	19.1	28	39
PSND270G0280400	28 x 1/2"	80	15	42.5	26
PSND270G0280600	28 x 3/4"	65	16.3	25	31
PSND270G0280800	28 x 1"	69	19.1	26	39
PSND270G0281000	28 x 1 1/4"	75.5	21.4	30.5	48
PSND270G0350800	35 x 1"	87.5	19.1	41.5	39
PSND270G0351000	35 x 1 1/4"	73.5	21.4	24.5	48
PSND270G0351200	35 x 1 1/2"	86	21.4	38	55
PSND270G0421000	42 x 1 1/4"	92	21.4	39	48
PSND270G0421200	42 x 1 1/2"	77	21.4	24	55
PSND270G0541200	54 x 1 1/2"	102.5	21.4	44	55
PSND270G0541600	54 x 2"	91.5	25.7	29	67
PSND270G0762000	76 x 2 1/2"	115.5	26.6	35.5	84
PSND270G0892400	88.9 x 3"	133	28.2	47	96

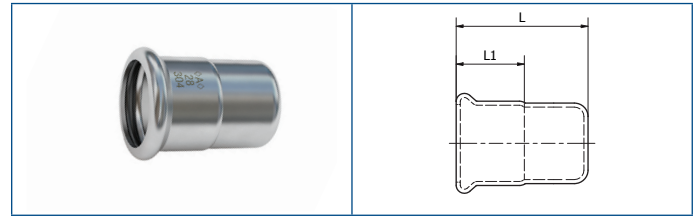
24



**PSND275**  
Slip Coupler

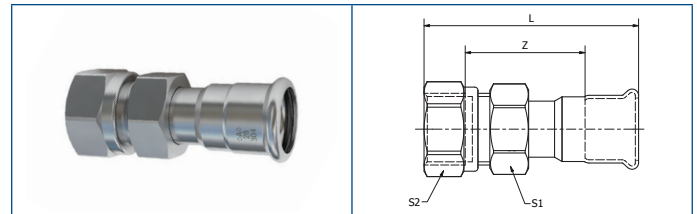
Code 304	Fitting size	L
PSND275 0150000	15	74
PSND275 0180000	18	78
PSND275 0220000	22	83
PSND275 0280000	28	92
PSND275 0350000	35	101
PSND275 0420000	42	118
PSND275 0540000	54	142
PSND275 0760000	76.1	224
PSND275 0890000	88.9	252
PSND275 1080000	108	304

\*All above measurements are in mm unless stated differently.



PSND301  
Cap End

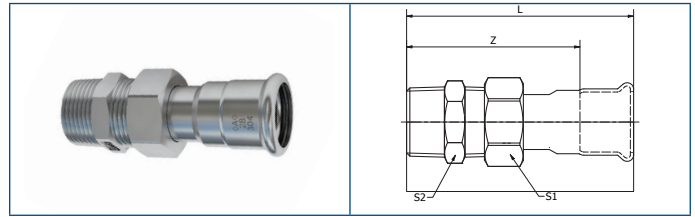
Code 304	Fitting size	L	L1
PSND301 0150000	15	41	20
PSND301 0180000	18	43	20
PSND301 0220000	22	44	21
PSND301 0280000	28	47.5	23
PSND301 0350000	35	51	26
PSND301 0420000	42	52.5	30
PSND301 0540000	54	62	35
PSND301 0760000	76.1	101	53
PSND301 0890000	88.9	112	58
PSND301 1080000	108	134	72



PSND340G  
3-pcs female thread union

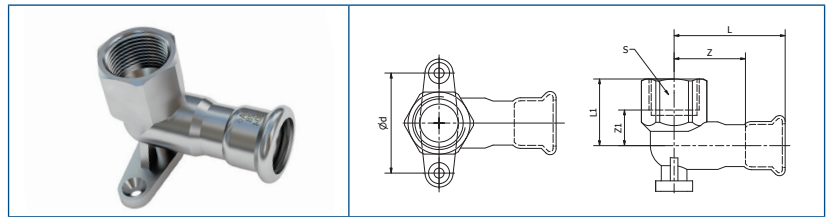
Code 304	Fitting size	L	Z	S1	S2
PSND340G0150400	15 x 1/2"	74.5	32.5	24	22
PSND340G0150600	15 x 3/4"	78.5	34.5	30	27
PSND340G0180400	18 x 1/2"	76.5	34.5	24	22
PSND340G0180600	18 x 3/4"	77.5	32.5	30	27
PSND340G0220600	22 x 3/4"	77.5	32.5	30	27
PSND340G0220800	22 x 1"	84.5	35.5	36	34
PSND340G0280800	28 x 1"	88	37	36	34
PSND340G0281000	28 x 1 1/4"	91	38	46	43
PSND340G0351000	35 x 1 1/4"	93.5	37.5	46	43
PSND340G0421200	42 x 1 1/2"	106	44	52.5	50
PSND340G0541600	54 x 2"	120	48	65	60

\*All above measurements are in mm unless stated differently.



**PSND341G**  
3-pcs male thread union

Code 304	Fitting size	L	Z	S1	S2
PSND341G0150400	15 x 1/2	91.5	71.5	24	21.5
PSND341G0150600	15 x 3/4	94.5	74.5	30	27
PSND341G0180400	18 x 1/2"	93.5	73.5	24	21.5
PSND341G0180600	18 x 3/4"	91.5	71.5	30	27
PSND341G0220400	22 x 1/2"	87	67	30	28
PSND341G0220600	22 x 3/4"	94.5	73.5	30	27
PSND341G0220800	22 x 1"	101	80	36	34
PSND341G0280800	28 x 1"	104.5	81.5	36	34
PSND341G0281000	28 x 1 1/4"	109	86	46	43
PSND341G0351000	35 x 1 1/4"	111.5	85.5	46	43
PSND341G0421200	42 x 1 1/2"	125	95	52.5	50
PSND341G0541600	54 x 2"	141	106	64	62



**PSND471G**  
Wallplate Elbow ISO -7

Code 304	Fitting size	L	L1	Z	Z1	ød	S
PSND471G0150400	15 x 1/2"	48.5	27	28.5	12	45	26
PSND471G0180400	18 x 1/2"	50.5	27	30.5	12	45	26
PSND471G0220600	22 x 3/4"	58	35	37	18	50	31



## Fitting Lubricant for O-ring

Code	Size
MPABPSOIL100ML	100 ml



## <A> Press Inox Tube

Code	Grade	Length (M)	Marking
PSTUBE-304-15 15 x 1.0 x 6M	304	6	<A>
PSTUBE-304-15T 15 x 0.6 x 6M TW			
PSTUBE-304-18 18 x 1.0 x 6M			
PSTUBE-304-18T 18 x 0.7 x 6M TW			
PSTUBE-304-22 22 x 1.2 x 6M			
PSTUBE-304-22T 22 x 0.7x6M TW			
PSTUBE-304-28 28 x 1.2 x 6M			
PSTUBE-304-28T 28 x 0.8 x 6M TW			
PSTUBE-304-35 35 x 1.5 x 6M			
PSTUBE-304-35T 35 x 1.0 x 6M TW			
PSTUBE-304-42 42 x 1.5 x 6M			
PSTUBE-304-42T 42 x 1.2 x 6M TW			
PSTUBE-304-54 54 x 1.5 x 6M			
PSTUBE-304-54T 54 x 1.2 x 6M TW			
PSTUBE-304-76 76.1 x 2.0 x 6M			
PSTUBE-304-76T 76.1 x 1.5 x 6M TW			
PSTUBE-304-89T 89 x 2.0 x 6M TW			
PSTUBE-304-114 108 x 2.0 x 6M TW			

## 13. Product Guarantee

When professionally installed, used and maintained in accordance with the installation and maintenance instructions detailed in the <A> Press Inox technical brochure available on the Conex Bänninger website [www.conexbanninger.com](http://www.conexbanninger.com).

304

Conex Universal Ltd. guarantees that <A> Press Inox (304) supplied by Conex Universal Ltd. will be free of material defects resulting from errors in manufacture, for ten (10) years from the date of first purchase by an end user. This Guarantee is limited to the repair or replacement of defective product(s) (at the sole discretion of Conex Universal Ltd.). At the request of Conex Universal Ltd. the allegedly defective product(s) must be returned to the address below\* and Conex Universal Ltd. reserves the right to inspect and test the alleged defects. This guarantee provided by Conex Universal Ltd. does not affect your statutory rights.

The Guarantee set out above is given by Conex Universal Ltd. and subject to the following conditions:

A. Any alleged defects must be reported to Conex Universal Ltd. within one month of the first occurrence of any such alleged defect, clearly setting out the nature of the claim and the circumstances surrounding it.

B. Conex Universal Ltd. shall be under no liability in respect of any defect in any product arising from:

- defective installation,
- fair wear and tear,
- wilful damage,
- negligence of any party other than Conex Universal Ltd.,
- abnormal working or environmental conditions,
- failure to follow the instructions of Conex Universal Ltd.,
- misuse (which includes any use of the product(s) concerned for a purpose or in a situation / environment or for an application other than that for which it was designed), or
- alteration or repair of any product without the prior approval of Conex Universal Ltd.

C. At the request of Conex Universal Ltd. the person claiming under this guarantee must deliver to Conex Universal Ltd. written evidence of the date of first purchase by an end user of the product(s) concerned.

\* The address for returns is:

IBP Instalittings Sp. z o.o.

Sales and Marketing

ul. Za Motelem 2A, 62-080 Tarnowo Podgórne / Sady

Email: [technicalpl@ibpgroup.com](mailto:technicalpl@ibpgroup.com)



---

Notes

---

---

---

---

---

---

---

---

---

---

---

---

---

---

---

---

---

---

## International Contacts

<p><b>United Kingdom</b>          Tel: +44 (0)121 557 2831          Email: salesuk@ibpgroup.com</p>	<p>Global House, 95 Vantage Point          The Pensnett Estate, Kingswinford, West Midlands          DY6 7FT          UK</p>
<p><b>Africa</b>          Tel: +351 918 805 900          Email: sales.africa@ibpgroup.com</p>	<p>Poligono Industrial          Quintos Aeropuerto          14005          Spain</p>
<p><b>China</b>          Tel: 0086 4001085686          Email: nbibp@ibpchina.com</p>	<p>Technical Service Center          Floor 43, Building A, International Trade Center, Ningbo Chamber of Commerce          No.558 of Taikangzhong Road, Yinzhou District, Ningbo, China 315100</p>
<p><b>France</b>          Tel: +33 967 579 554          Email: sales.france@ibpgroup.com</p>	<p>45 Rue Boissiere, Paris,          75016          France</p>
<p><b>Germany and Central Europe</b>          Tel: +49 (0) 6403 / 77 85 – 0          Email: customerservicede@ibpgroup.com</p>	<p>Theodor-Heuss-Strabe          18 35440          Linden, Germany</p>
<p><b>International (Rest of world)</b>          Tel: +44 (0)121 521 2921          Email: international@ibpgroup.com</p>	<p>Global House, 95 Vantage Point          The Pensnett Estate, Kingswinford, West Midlands          DY6 7FT          UK</p>
<p><b>Italy</b>          Tel: +39 0521 299711          Email: tecnico.ibpbanneritalia@ibpgroup.com</p>	<p>Piazza Meccio Ruini 9A          43126          Parma          Italy</p>
<p><b>Middle East</b>          Tel: +971 (0) 4 434 0082          Email: gulf@ibpgroup.com</p>	<p>One JLT Tower, Level 5, Office 12          Jumeirah Lake Towers          Dubai, UAE</p>
<p><b>Poland and Eastern Europe</b>          Tel: +48 61 660 96 40          Mob: +48 603 421 244          Email: customerservicePO@ibpgroup.com</p>	<p>ul. Stanisława          Zwierzchowskiego 29          61-248          Poznan, Poland</p> <p>ul. Za Motelem 2A          Tarnowo Podgorne          62-080          Sady, Poland</p>
<p><b>Spain and Portugal</b>          Spain: Tel: +34 957 469 629          Email: Sales.spain@ibpgroup.com          Portugal: Tel: +351 918 805 900          Email: salesportugal@ibpgroup.com</p>	<p>Poligono Industrial          Quintos Aeropuerto          14005          Spain</p>
<p><b>USA</b>          Tel: 904-217-4970          Email: salesUSA@ibpgroup.com</p>	<p>Suite 400, 24 Cathedral Place          St Augustine, Florida          32084</p>

Note: The full range of Conex Bänninger products may not be available for sale in your country. Please contact customer services to discuss range availability.